



LEELANJALI

ROCK DRILL

— This company has been in the market since 2016 —

Work Experience: Since 2013



**Kelwa chopati sardul road, shivdhara
complex Rajsamand, Rajasthan 313334**



7737676109,7742090099
LEELANJALII1610@GAMIL.COM

SLIM DRILL LD4 MACHINE (GREASE BASED)



This machine is used for drilling in quarry. It's a masterpiece and it can drill both vertical and horizontal holes. This machine is suitable for various applications such as line drilling, blast hole drilling. This machine is known for its especially task like splitting large stone blocks. LD4 is a user-friendly machine.

• Technical Details

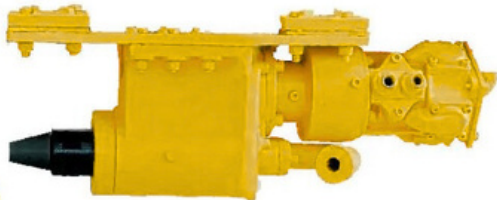
1.	Hole diameter	3 inch - 7 inch
2.	vertical drilling depth	30 meter
3.	Horizontal drilling depth	20 meter
4.	Drill rod length	1.5 meter (4 fit)
5.	Approx weight	700kg
6.	Chassis	5 inch

Lubary penal



This is the control panel especially designed for operate the LD-4 machine with its help, even a single person can easily manage the machine.

• LD-4 machines spare parts



Rotation motor.



Winch motor



Air motor.

LD-6 FAST DRILLING MACHINE



This machine is used for drilling in quarry. It's a heavy-duty machine. It can drill both vertical and horizontal holes. The LD-6 machine is designed as an alternative to a crawler machine, both perform the same work, but the LD-6 machine is budget-friendly.

• Technical Details

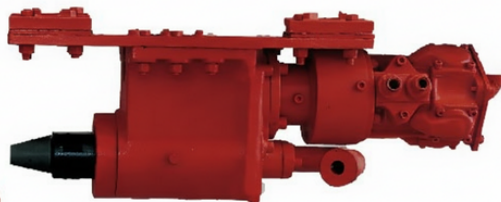
1.	LD-6 length	9 ft
2.	vertical drilling depth	150 ft (max.)
3.	Horizontal drilling depth	90 ft (max.)
4.	Drill rod length	1.5 meter (4 ft)
5.	Approx weight	1000-1200kg
6.	Chassis	6 inch

LD-6 Lubary penal

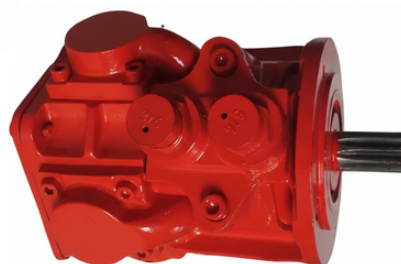


This is the control panel especially designed for operating the LD-6 machine with its help, even a single person can easily manage the machine.

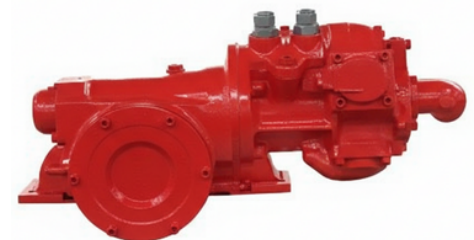
• LD-6 machines spare parts



LD-6 Rotation motor.



LD-6 Air motor.



LD-6 Winch motor

HAMMER & DEILL SPARES PARTS



Drill rod



Hammer spare



DTH hammer



Drill rod



Dth button bit



Drill machine



Drill machine spare

WAIRE SAW MACHINE

LEELANJALI ROCK DRILL develops top-quality wire saw machines. this is powerful and modern cutting tool. that enable precise cutting of marble and granite efficiently. wire was machine using a diamond wire cutting easily and perfect accuracy Our cutting-edge machine designs help the stone sector work more productively while staying easy to maintain.

Feature	Typical Specification
Power	20 HP, 40 HP, 60 HP, or 75 HP
Power	3-Phase A.C.& D.C Electric Motor
Main Pulley	600 mm to 800 mm diameter
Control	1 HP DC motor with gearbox for traveling on tracks
Control	Independent electrical control panel (often with a 10m cable)

Type of waire saw

1. Without spindle :-



A Single-Shaft Wire Saw Machine without spindle generally refers to a design where the main flywheel is mounted directly on the motor shaft, rather than through a separate spindle housing and belt-pulley system." Available in 40 HP, 60 HP, and 75 HP variants, catering to various cutting requirements

2. spindle with main shaft

When we talk about “Spindle with Shaft Wire Saw Machine”, it is a traditional design . its has been used many long time . All most people used this machine because powerful and simple machine variable in 40 HP, 60 HP, and 75 HP variants, catering to various cutting requirements.



3. Direct moter system

The Direct Motor Wire Saw (also known as the Direct Drive Wire Saw) is considered the most modern and efficient stone cutting machine. The main difference is that it does not have a separate spindle housing or belt-pulley system.

Available in only 20Hp variants.



WIRE SAW MACHINE SPARES PARTS



Wheel



R. ring 790



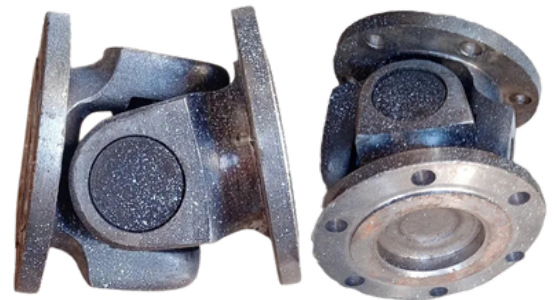
spindle



Thali pinian



AC /DC gear



cross holder



Main shaft

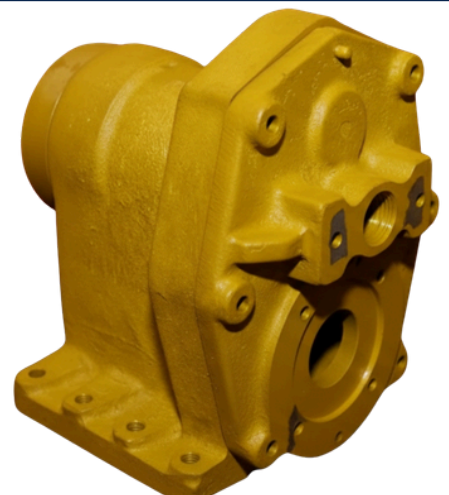
LD-4 SPARES PARTS



winch body



planetary housing



Rotation body



cylinder



liner bush



Double piston



planetary Shaft



warm shaft



Adaptor



warm wheel



planetary gear

